

friendlyway imagine

Installation and User Guide



Contents

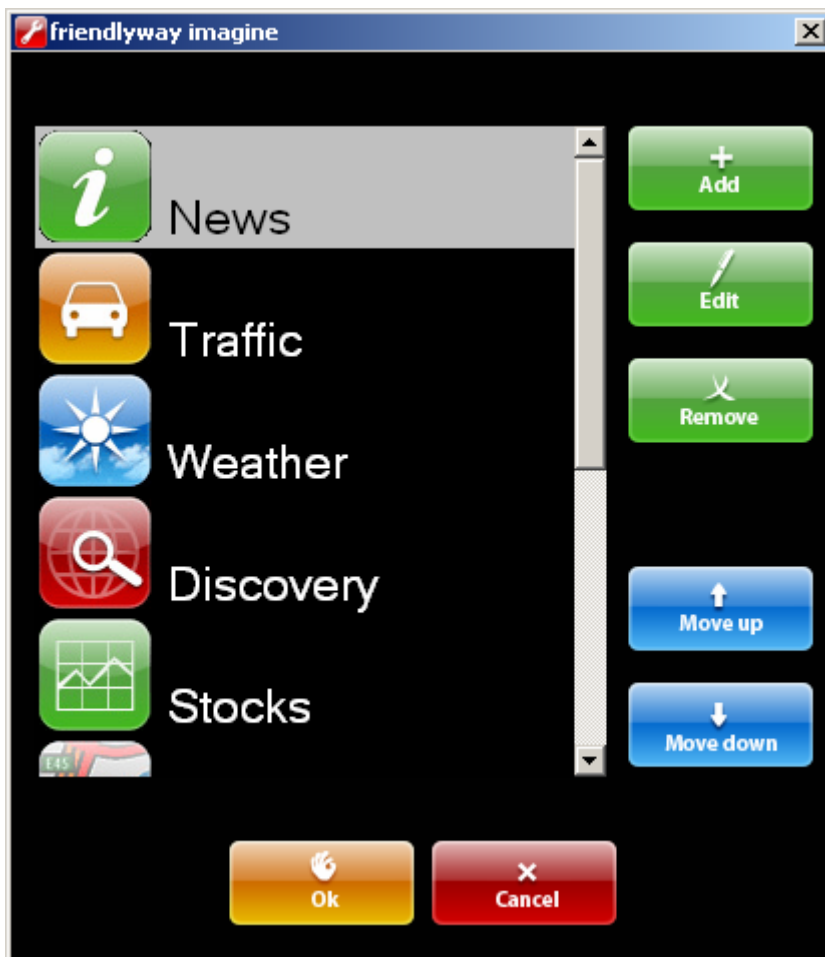
1. Installation of friendlyway imagine.....	3
2. Configuration of friendlyway imagine	3
2.1. Adding the buttons.....	4
2.2. Removing the buttons	5
2.3. Changing the order of buttons	6
2.4. Changing the properties of buttons.....	7
3. Saving the configuration	8
4. Starting and closing the application	9

1. Installation of friendlyway imagine

friendlyway imagine requires installation of *friendlyway secure browser*. After you have installed *secure browser*, execute the file *friendlyway imagine.msi* and follow instructions of the installation wizard. The application will be installed in the following directory: C:\friendlyway imagine. Two shortcuts will be created on the desktop: *friendlyway imagine configurator* und *friendlyway imagine*.

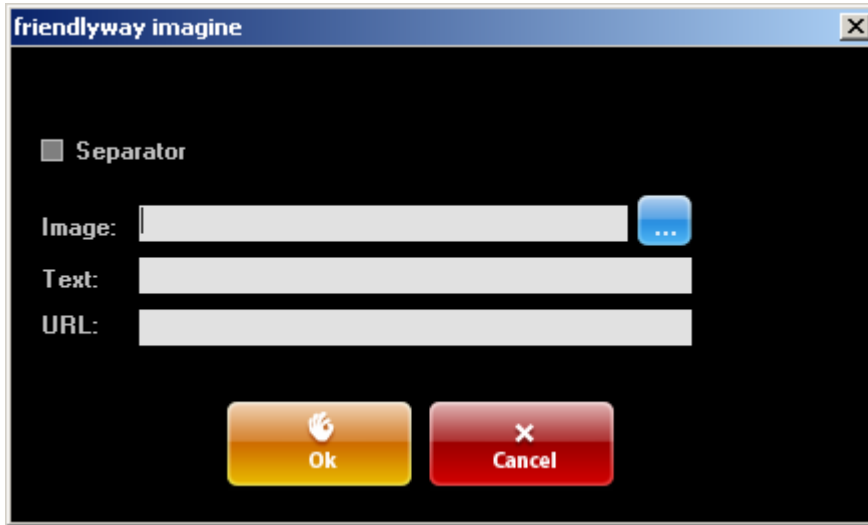
2. Configuration of friendlyway imagine

You can customize *friendlyway imagine* accordingly to your requirements by adding and removing buttons as well editing buttons' properties. To configure *friendlyway imagine*, launch the *friendlyway imagine configurator* application via shortcut on the desktop. The following window will appear:

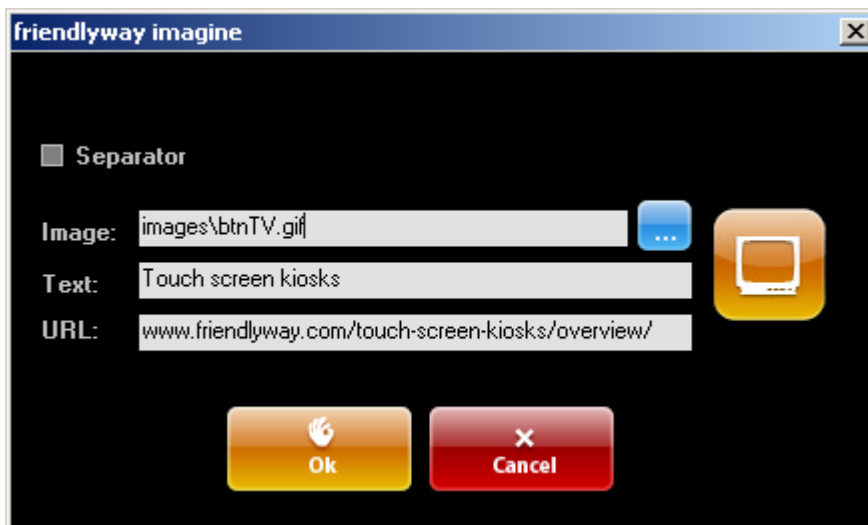


2.1. Adding the buttons

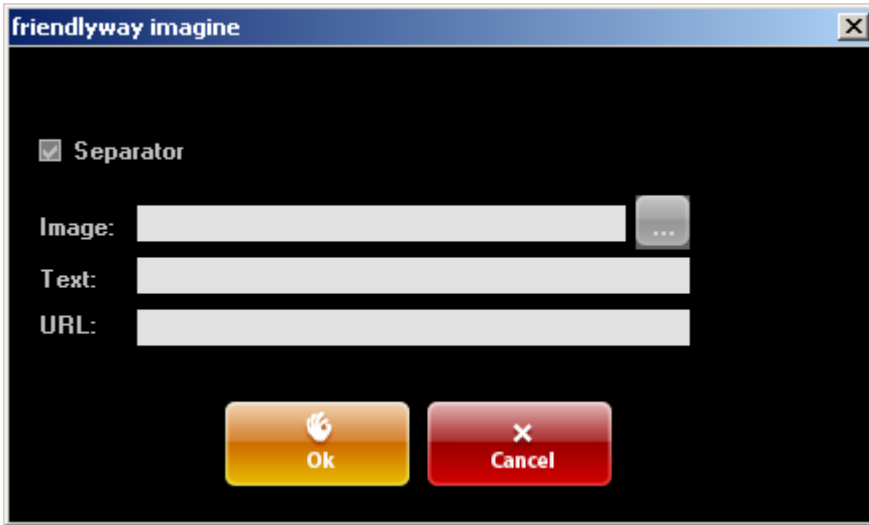
To add a button, click on *Add* in the right menu. The following window will appear:



Select the picture to be used as a button. **Important!** This picture must be in GIF format and have the size of 56x56 pixels. Specify the name of the button in the *Text* field. Enter the URL of the required page without protocol indication in the *URL* field, e.g. www.friendlyway.com/touch-screen-kiosks/overview/.

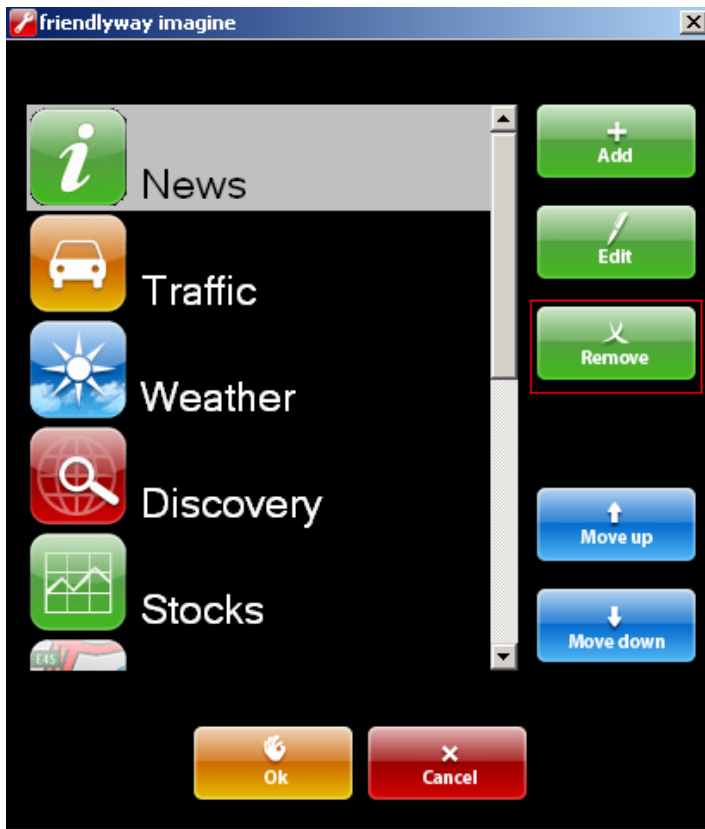


If a separator (gap) between buttons is needed, click *Add* in the right menu of the main window, activate the *Separator* checkbox in the next window, and click *OK*:



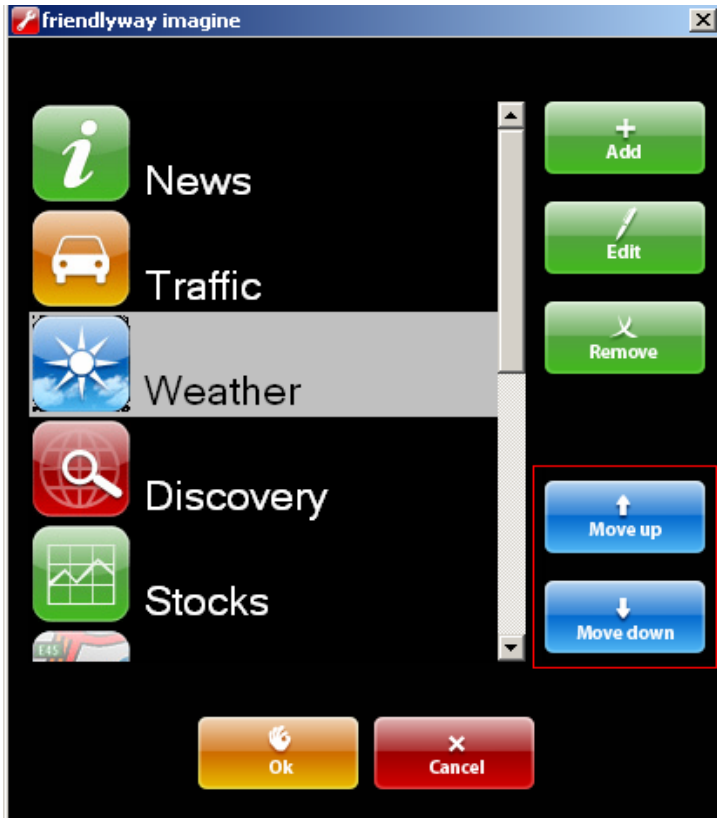
2.2. Removing the buttons

If you want to take away a button from the menu, select the corresponding button from the list, and click on *Remove*:



2.3. Changing the order of buttons

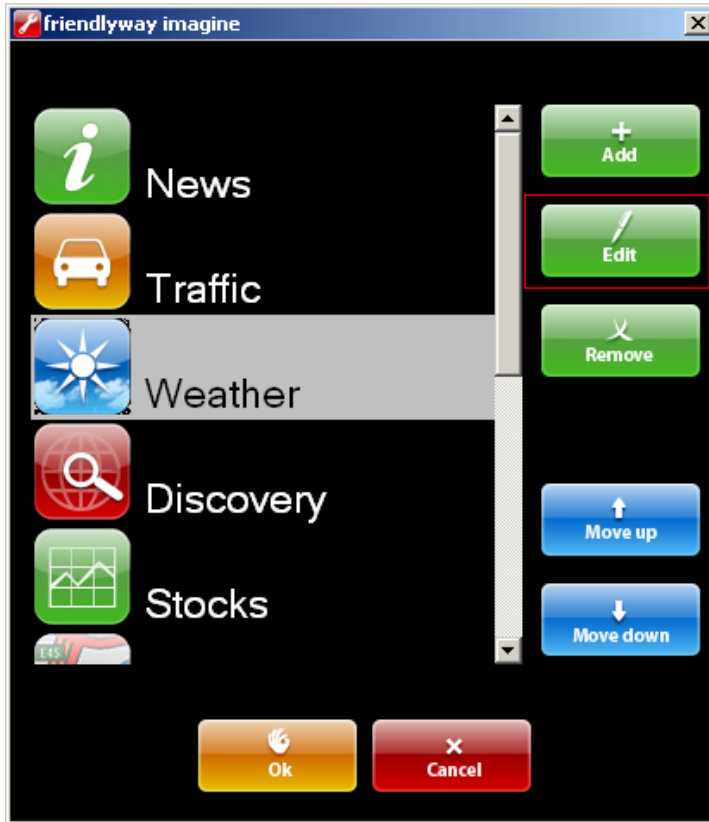
To move a button up or down in the list, select the corresponding button, and click on *Move Up* or *Move Down*:



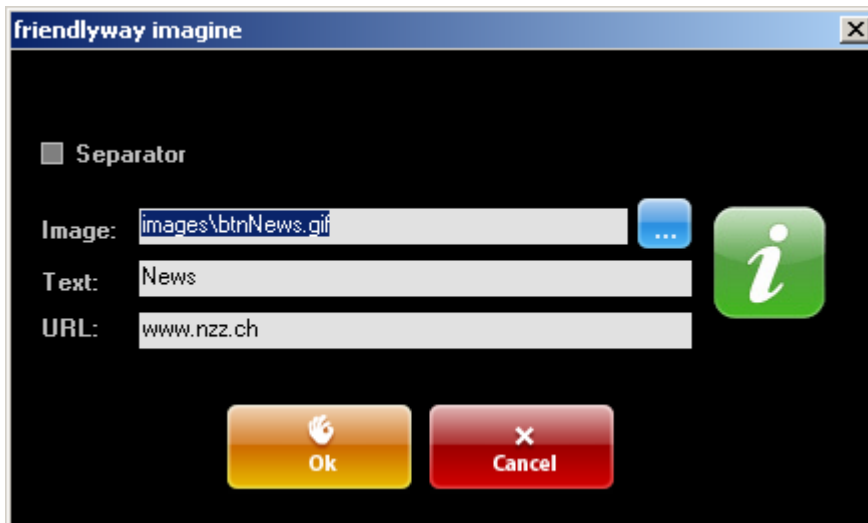
2.4. Changing the properties of buttons

To edit the properties of an already existing button:

- select the required button from the list, and click *Edit* in the right menu:



- change the fields in the next window as you wish, and click *OK*:



3. Saving the configuration

After you have configured the application, click on the *OK* button in the main window. If you want to undo the changes you made, click *Cancel*:



4. Starting and closing the application

To start the application, use the *friendlyway imagine* shortcut on the desktop. *friendlyway secure browser* with the *friendlyway imagine* application will start:



To close the *friendlyway imagine* application, click the *ESC* key.